

NON-PRO:IDIOM HOSPITALITY TELEVISION

BE SERIES



J55BE1220

BE SERIES

A Full line of Non-Pro:Idiom Televisions

The RCA Commercial Value (BE) Series is the entry level line to Commercial Televisions. Designed to withstand long operating hours that business' require, the BE Series has built in thermal characteristics for proper heat dispersion, unlike consumer competitors, to keep the TV operating safely for an extended period. Features including the Anti-Theft swivel with lockdown plate, secure the TV to furniture to deter unauthorized movement of the TV. The 'Scheduler' feature allows the operator to set an ON and OFF time for each television, ideal for lobby or digital signage use.

Accessories

Guest Remote



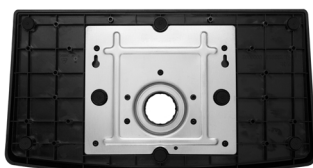
R230D1A

Master Remote



R230D2*

Anti-Theft Swivel Stand



Lockdown Plate may vary

* Master remote R230D2, not included in standard TV box. Contact RCA to order.

SIZES | MODEL



BE Series Bezel. Bezels vary based on model.

22" | J22BE1220

28" | J28BE929

32" | J32BE1220

40" | J40BE929

43" | J43BE929

49" | J49BE929

55" | J55BE1220

FEATURES



Scheduler



IR Pass-thru



Lockout



USB Cloning Capable



Anti-Theft



Clock Manager



Volume Limiter Initial Volume



Channel Settings



Auto Power Off



Last Power Mode



Energy Saving LED Tech.



USB File Play



Auto Channel Guide



V-Chip Reset



VESA Pattern



1 Year Warranty

SPECIFICATIONS

BE SERIES



Model	J22BE1220	J28BE929	J32BE1220	J40BE929	J43BE929	J49BE929	J55BE1220
Video							
Screen Size (Diagonal)	21.75"	27.6"	32.32"	39.6"	42.6"	48.8"	54.8"
Resolution	1920 x 1080 (HD)		1366 x 768 (HD)	1920 x 1080 (HD)			
Digital Rights Management	None						
Type	Direct-Lit LED						
Brightness (Typical)	200 cd/m²			250 cd/m²	230 cd/m²	250 cd/m²	
Response Time (Typical)	8 ms			8.5 ms	8 ms	9 ms	6 ms
Viewing Angle	178° x 178°	176° x 176°			178° x 178°		
Frame Rate	60 Hz						
Tuners	NTSC/ATSC/Clear QAM Tuner						
UPC	811635022233	811635021427	811635021403	811635021410	811635021434	811635021717	811635022202

Audio			
Audio Output / Speaker	3W + 3W / 2CH	8W + 8W / 2CH	10W + 10W / 2CH
Sound Modes	6 Modes (Standard, Music, Movie, Sports, News, Manual)		
Dolby Digital Decoder™	Yes		
Volume Limiter Feature	Yes		

Power							
Typical (Watts)	< 22 W	< 45 W	< 55 W	< 62 W	< 65 W	< 72 W	< 92 W
Standby (Watts)	< 1 W						
Power Supply	AC 100V - 240V, 60 Hz						
Power Cable (Detachable)	49.5"	48"	48"	60"	60"	62"	64"

Dimensions							
VESA (sizes in mm)	100 × 100		200 × 100	200 × 200	400 × 200		
VESA™ Screw Size	M4	-	-	-	-	M6	
Stand Type	Anti-Theft Swivel Stand						
TV (W × H × D)	20" x 11.75" x 3"	24.6" x 15.4" x 2.95"	29.7" x 17.4" x 3"	35.9" x 20.9" x 2.94"	38.5" x 22.7" x 3.42"	43.76" x 25.6" x 3.42"	49.6" x 28.5" x 4"
TV & Stand (W × H × D)	20" x 13.75" x 6.5"	24.6" x 17.5" x 7.08"	29.7" x 19.4" x 7.08"	35.9" x 22.9" x 7.08"	38.5" x 24.9" x 9.15"	43.76" x 27.8" x 9.15"	49.6" x 31.5" x 9"
Weight (lbs.)	5.2 lbs	9.8 lbs	10.9 lbs	15.2 lbs	17.8 lbs	24.6 lbs	30.2 lbs
Shipping Size (W × H × D)	23" x 16" x 5.5"	28.75" x 20.5" x 6"	32" x 21.5" x 6"	40" x 26.5" x 6.5"	42" x 28.7" x 7"	48.5" x 31.5" x 7"	55.5" x 32.25" x 6.75"
Shipping Weight (lbs.)	6.6 lbs	12.3 lbs	14.5 lbs	20.2 lbs	28 lbs	37.5 lbs	39.11 lbs

Connectivity J22BE1220							
Ports (L to R)	Back Panel 1. Head Phone 2. Optical 3. Audio In 4. Component In 5. VGA 6. PC Audio				Side Panel 1. HDMI 1 2. RF RG-6 Coax 3. IR Pass Through 4. Audio Out		

Connectivity 32" to 55" Models							
Panels (Back Panel, Side Panel)							
Ports (L to R)	Back Panel 1. IR Pass Thru 2. Audio Out (32", 40", 43" Only) 3. Headphone 4. Optical 5. Audio In 6. Component In 7. HDMI 1				Side Panel 1. HDMI 2 2. HDMI 3 3. VGA 4. PC Audio 5. RF RG-6 Coax 6. Line Out (49" & 55" Only) 7. USB		

Certifications				WARNING			
TUV, FCC, RoHS, Lead Free, CEC, Energy Guide				This product can expose you to chemicals including lead, which is known to the state of California to cause cancer and birth defects or other reproductive harm. Wash hands after handling. For more information go to www.P65Warnings.ca.gov			