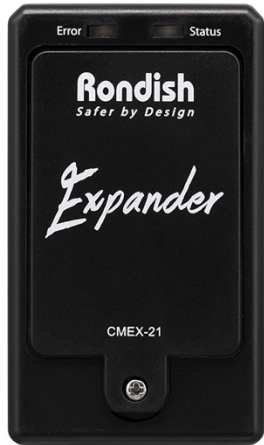




Cordless Expander CMEX-21

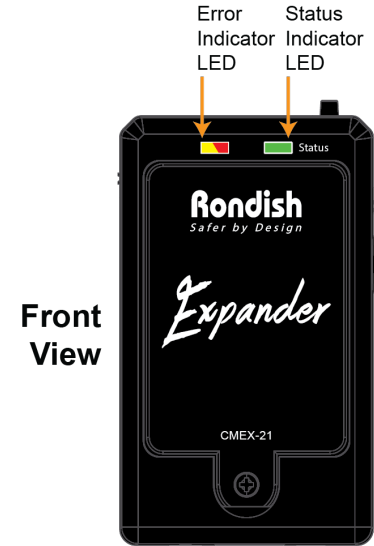
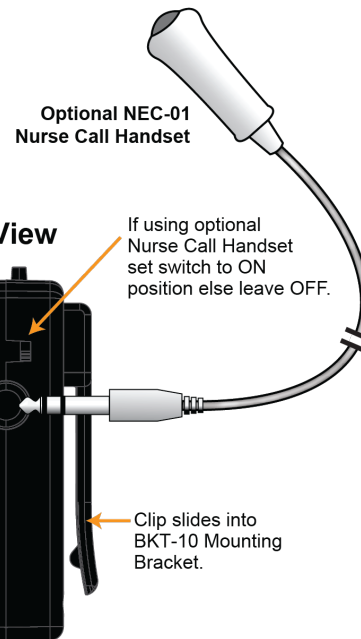
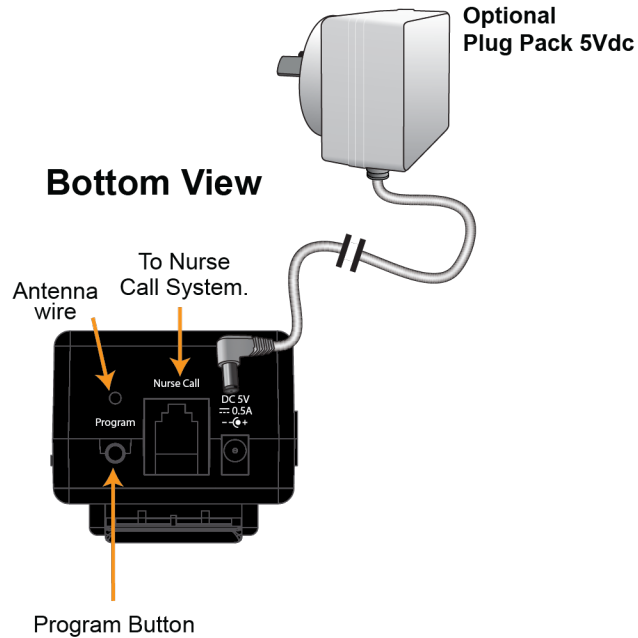
with Bracket Mount



Manufactured by

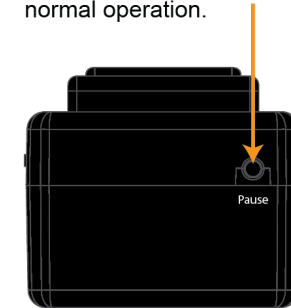


Rondish Company Limited
Unit G&H, 4/F, Block 1, Kwai Tak Ind. Ctr.,
15-33 Kwai Tak Street, Kwai Chung, N.T.
Hong Kong

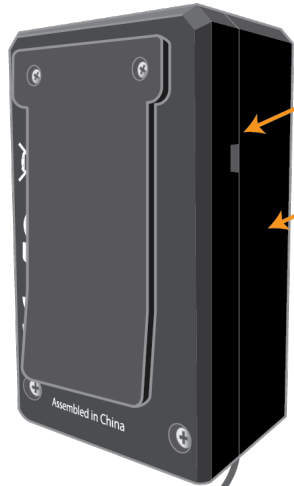


Pause Button

1. Will clear any fault conditions e.g. Signal Lost or Low Battery
2. If no fault condition, then it will activate a 3 minute delay. Status LED will flash during the delay and no alarms will be generated. Pressing again before the 3 minutes have elapsed will return the unit to normal operation.



Back View



NO/NC Switch
(Default setting: NO)

Error & Status Indicator
LED explanation.

Status LED: Green

Blinking	Pad Active
ON	Alarm Trigger

Error LED: Yellow/Red

Flashes	Expander	Cordless Pad
1	Low Bat.	Pad Low Bat.
2	Pad Disconnect	Signal Lost
3	AC Lost	

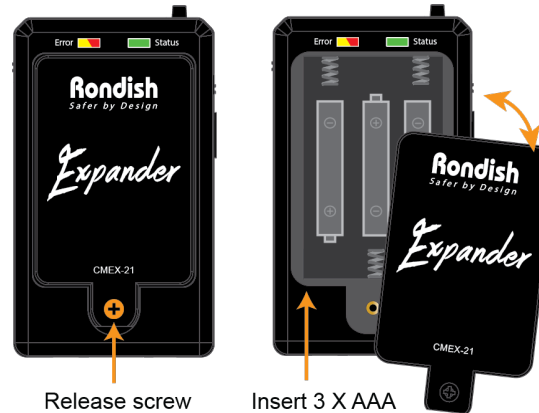
Antenna



**BKT-10 Mounting
Bracket**

SETUP

Step 1 - Insert 3 x AAA alkaline batteries into battery compartment.



Release screw
to open battery
compartment.

Insert 3 X AAA
alkaline batteries into
battery compartment.

CMEX-21 Cordless Expanders are designed to work in a facility on alkaline batteries equivalent to those originally supplied with the device.

Operable alkaline batteries must be installed in the device at all times during operation. Batteries must be removed from the device while it's in storage.

Step 2 - Pair Cordless Expander with transmitter/s.

Transmitters can be a Cordless Bed/Chair sensor pad, Emergency transmitter, or other Rondish wireless device.

- Place transmitters to be programmed within easy reach.**
- Clear the program memory :** Press & hold the Program button until the Error & Status LEDs illuminate. Keep holding down the Program button until the LEDs flash quickly, then release.

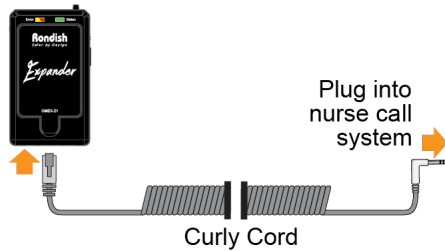
- Enter program mode :** Press & hold the Program button on the Cordless Expander until the Error & Status LEDs illuminate. Now release the Program button.
- Pair the first transmitter :**
 - For cordless pad / mat transmitter : turn the transmitter from OFF to ON. The Error LED will flash once to acknowledge successful pairing.
 - For all other transmitters : activate the transmitter (trigger an alarm). The Status LED will flash once to acknowledge successful pairing.
 - After a successful pairing the Cordless Expander will exit Program mode and the Status and Error LED will go out.
- Pair remaining transmitters :** repeat step 3 & 4 for each transmitter to be paired. Up to 2 cordless pad / mat transmitters and up to 3 other devices can be paired with each Cordless Expander.
- If transmitter is used** then connect it to cordless pad or mat & ensure that it is switched ON.



Please note : Transmitter insert which has been switched off will be in hibernation mode when it is switched on again. Be sure to activate it for 15 seconds to wake it up so that you can test it in Step 3. Please refer to the documentation that came with your transmitter if you require more information.

Step 3 – Plug Cordless Expander into nurse call system & test operation of all devices in their final location.

Ensure that you have a curly cord that has the correct plug configuration for your nurse call system (6.35mm)



Warnings ⚠ Test Cordless Expander prior to every use.

Optional Accessories (Sold Separately)

PT-11	Snap-on Transmitter
TXP-11(v2)	Emergency Transmitter
NEC-01	Nurse Call Handset
NEC-05(M)	Portable Handset
PIR-21	Wireless Motion Sensor
UT-11	Universal Transmitter / Door Sensor
DMS-21	DoorWatcher™ Monitor
NC-03	Nurse Call Curly Cord
AC-06	6V Power Adapter

FCC Compliance

This device complies with part 15 of the FCC Rules. Operation is subject to the following two conditions: (1) This device may not cause harmful interference, and (2) this device must accept any interference received, including interference that may cause undesired operation.

Notice :

Any changes or modifications not expressly approved by the party responsible for compliance could void your authority to operate the equipment.

NOTE : This equipment has been tested and found to comply with the limits for a Class B digital device, pursuant to part 15 of the FCC Rules. These limits are designed to provide reasonable protection against harmful interference in a residential installation.

This equipment generates, uses and can radiate radio frequency energy and, if not installed and used in accordance with the instructions, may cause harmful interference to radio communications. However, there is no guarantee that interference will not occur in a particular installation. If this equipment does cause harmful interference to radio or television reception, which can be determined by turning the equipment off and on, the user is encouraged to try to correct the interference by one or more of the following measures:

- Reorient or relocate the receiving antenna.
- Increase the separation between the equipment and receiver.
- Connect the equipment into an outlet on a circuit different from that to which the receiver is connected.
- Consult the dealer or an experienced radio/ TV technician for help.