

# Crest Healthcare - Sign Ordering Guide

## Available Sign Styles



### Contour Style

Projects less than 3/4" from the wall with a 3/8" thick beveled edge backplate in a designer shape.



### Marquis Style

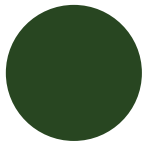
Features a low profile; projects less than 3/8" from the wall, with a brushed gold, silver or copper backplate in a designer shape.



### Contemporary Style

Features a low profile; projects less than 3/8" from the wall, with radius corners and a white accent line.

## Available Sign Colors (May Vary By Style)



Forest Green - S23



Delaware - S25



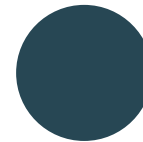
Kabuki Teal - S27



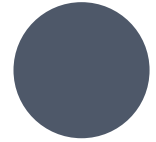
Dusty Jade - S26



Navy - S31



Colonial Blue - S29



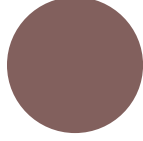
Brittany Blue - S33



Country Stone - S32



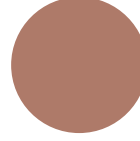
Blackberry - S07



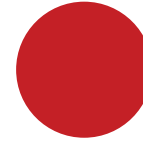
Sugarplum - S04



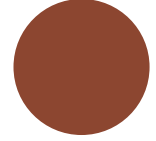
Burgundy - S11



Blush - S03



Red - S01



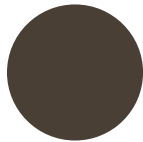
Cajun Spice - S10



Tan - S20



Slate - S34



Timberwolf - S35

## Ordering Notes

Choose from Contemporary, Marquis and Contour. All sign styles are manufactured exactly the same; the only difference is their unique shapes and accents. Each sign features a durable, scratch and chemical resistant sign face. All signs ship with white lettering unless otherwise noted. For the sign background color, see the color chart below. **Custom ordered signs are non-returnable and non-cancelable, please request sample color chips prior to placing your order.** For each sign ordered, remember to include product number, quantity, sign message and color.

**ORDER ONLINE OR BY PHONE TODAY!**



Crest Healthcare

Phone: 800-328-8908 Fax: 800-369-9207

CrestHealthcare.com