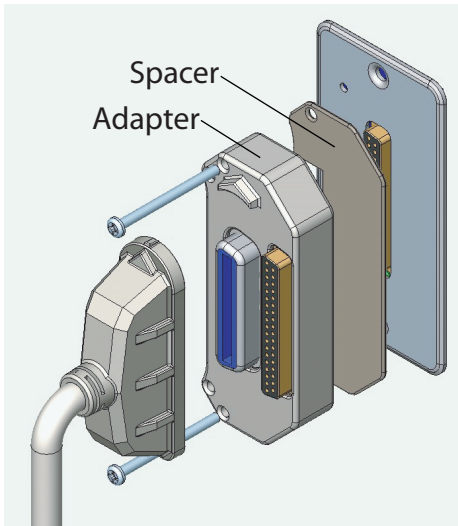


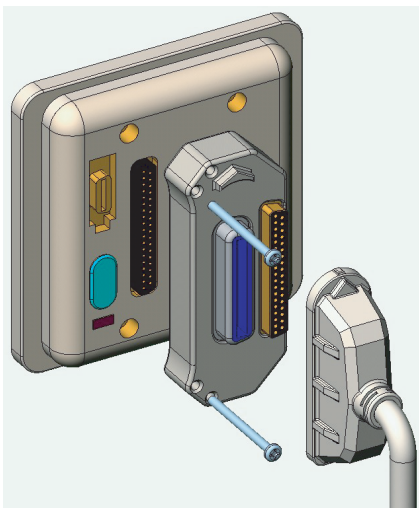
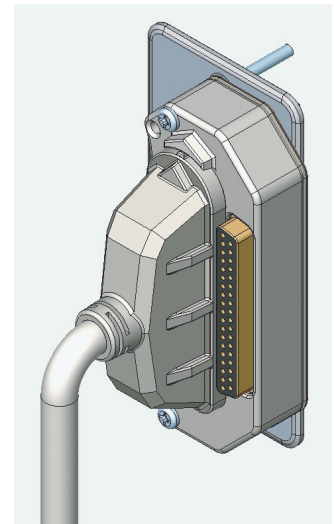
## INSTALLATION INSTRUCTIONS

### CableSaver Bed Communications Cable Adapter



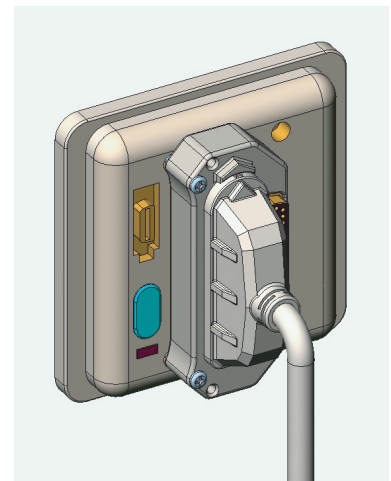
If you have a 37 pin receptacle plate:

1. Use the included spacer, as shown
2. Use included screws in place of existing wall plate mounting screws



If you have a bed interface unit:

1. Discard the spacer, as shown
2. Use included screws in place of existing bed interface unit mounting screws, on the left side only



For Technical Assistance  
Call Toll-Free U.S. & Canada

# 1-800-328-8908

Technicians On Duty